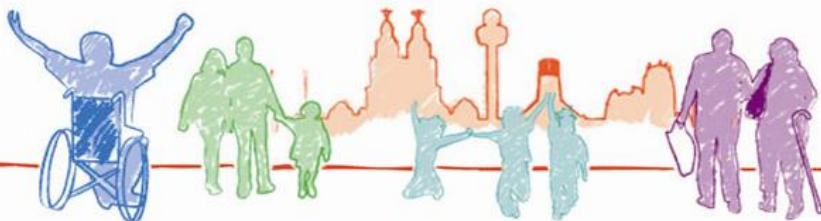


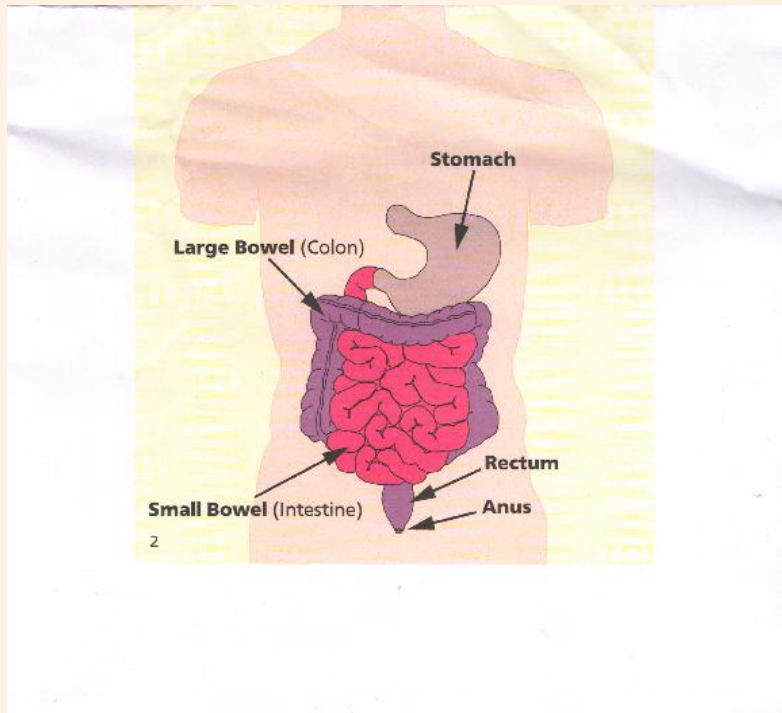
BE CLEAR ON CANCER

BOWEL CANCER CAMPAIGN

Maureen Sayer Health Promotion Specialist
Vivien Mansfield Primary Health Care Facilitator
Hayley Anderson Student Nurse Edge Hill
University



BOWEL



Know the facts

**Know
your
body
and
the
changes
to
look
for**



If you notice a change in your body contact your doctor



Signs and Symptoms Bowel Cancer

Blood in your poo or bleeding from your bum



Liverpool Community Health
NHS Trust



Signs and Symptoms Bowel Cancer

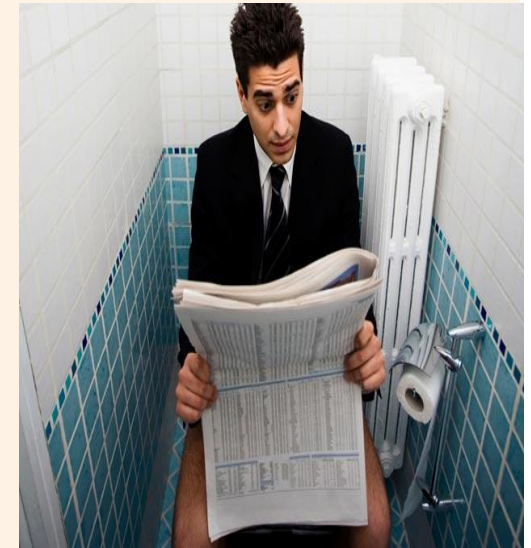
A change to your bowel habits that is different to your regular habits,

e.g.

diarrhoea

or

constipation



Liverpool Community Health



NHS Trust

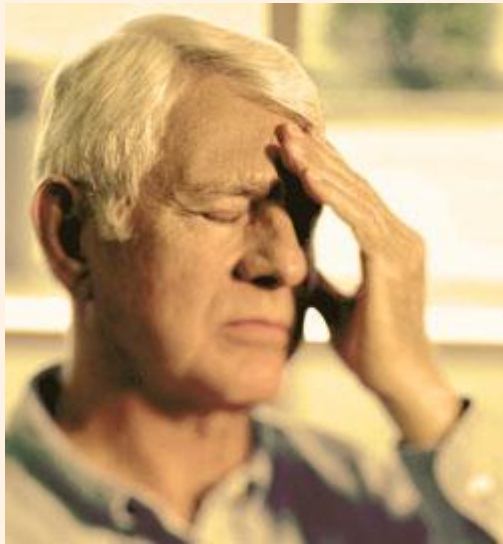
**If this lasts longer than 3 weeks see
your doctor**



Liverpool Community Health **NHS**
NHS Trust

Signs and Symptoms Bowel Cancer

More tired than usually



Liverpool Community Health



NHS Trust

Signs and Symptoms Bowel Cancer

Breathless



Liverpool Community Health

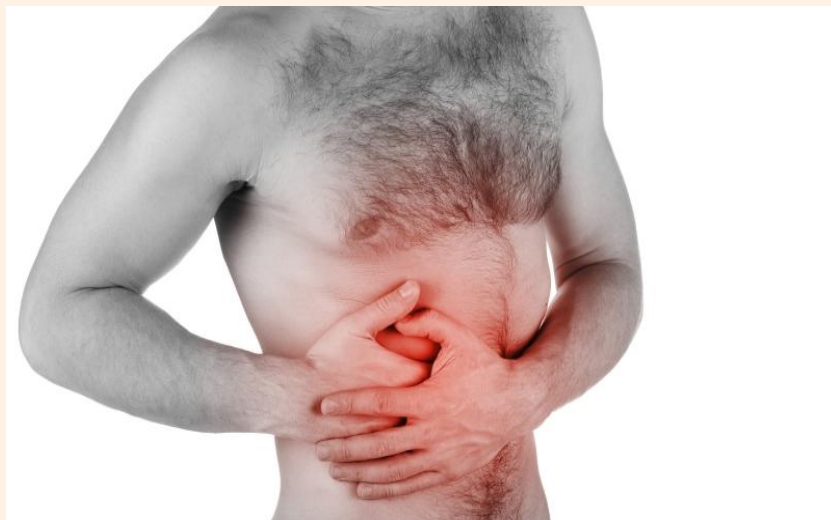


NHS Trust

Signs and Symptoms Bowel Cancer

Abdominal pain

Abdominal lump



Liverpool Community Health



NHS Trust

Signs and Symptoms Bowel Cancer

Unexplained weight loss



Liverpool Community Health



NHS Trust

If you notice a change in your body contact your doctor



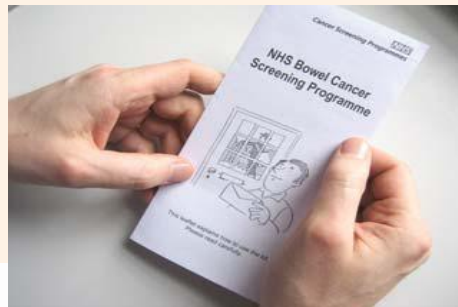
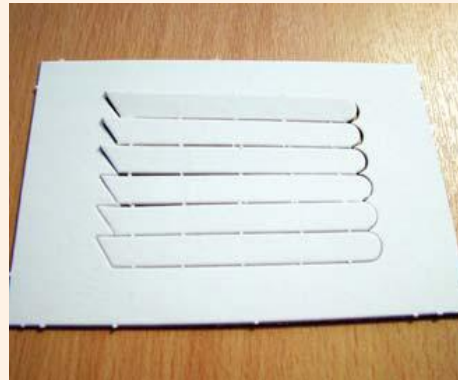
Bowel Cancer Screening Programme

You will be asked to take part in the Bowel Screening Programme every 2 years if you are aged 60 to 75



Take part in bowel screening when invited

You will get these things in the post



Take part in bowel screening when invited

You do the test in your own home.



There is a leaflet that tells you how to do the
bowel cancer screening test.



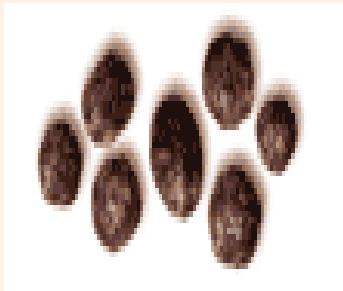
Liverpool Community Health
NHS Trust



Signs and Symptoms Bowel

Poo can be in all shapes and sizes

The test can be done with any type of poo

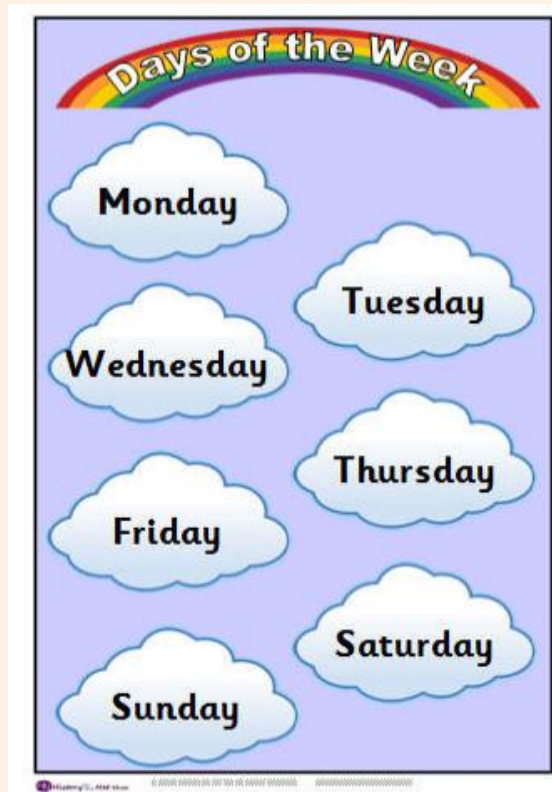


Liverpool Community Health

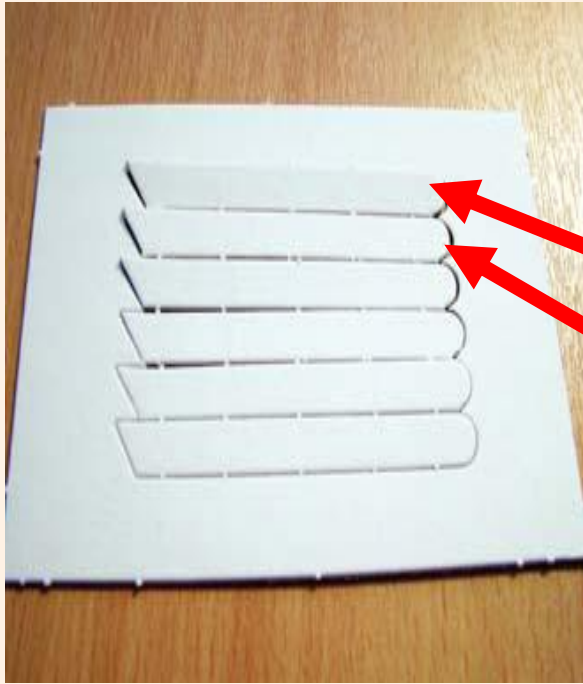


NHS Trust

The test is done over 3 days



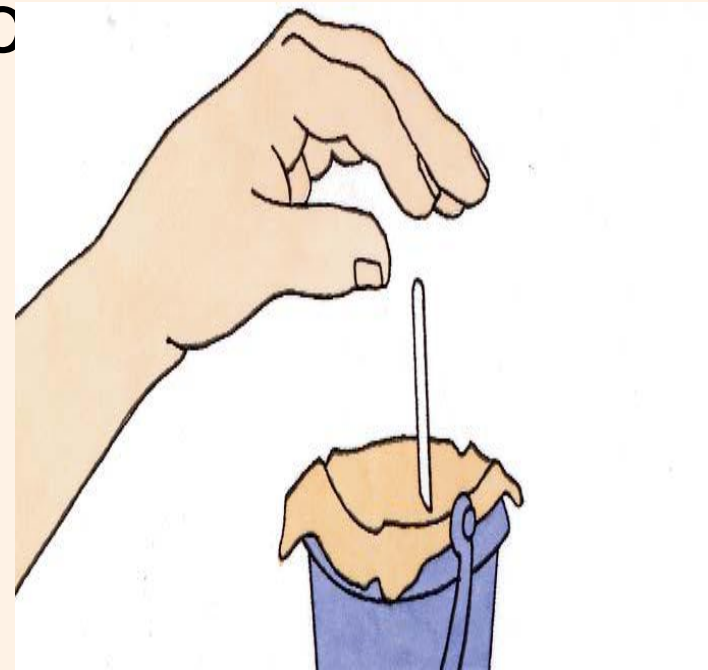
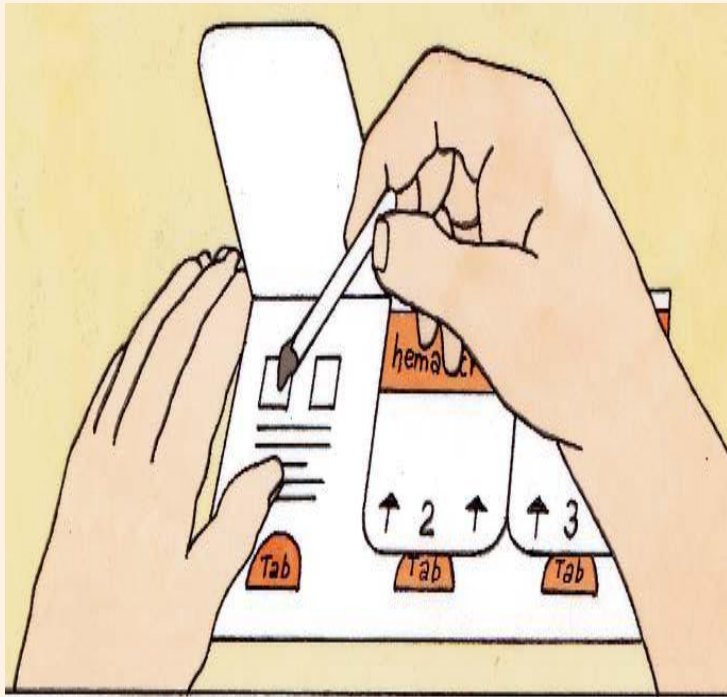
Use 2 sticks for Day 1 for 2 bits of poo



The way to use the card

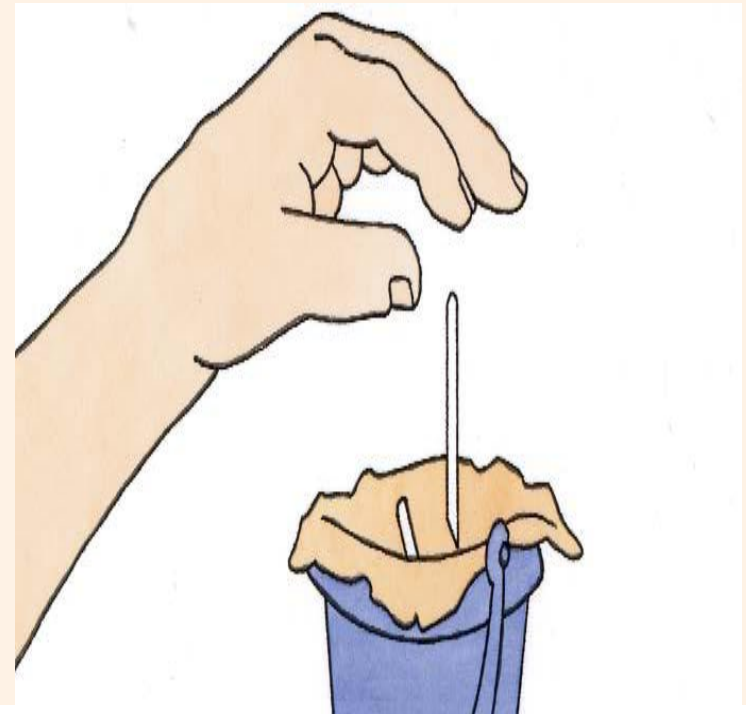
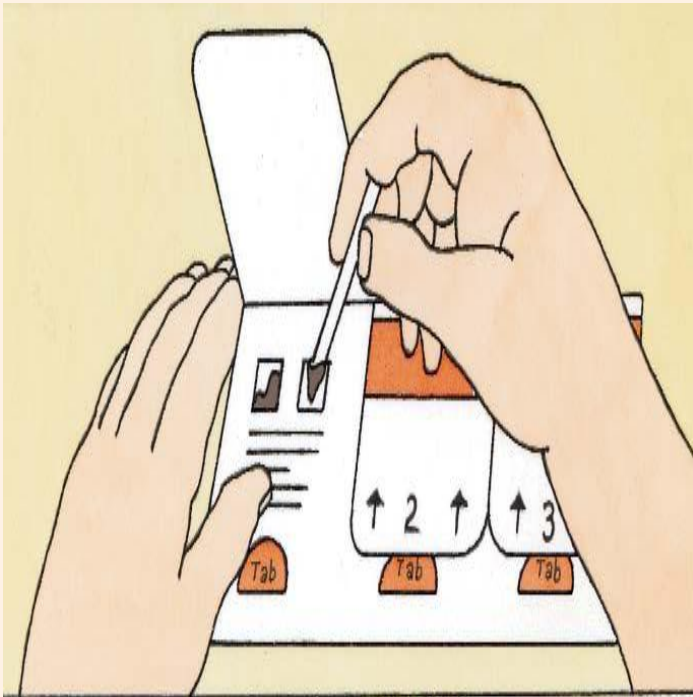
Use a clean stick for each

bc

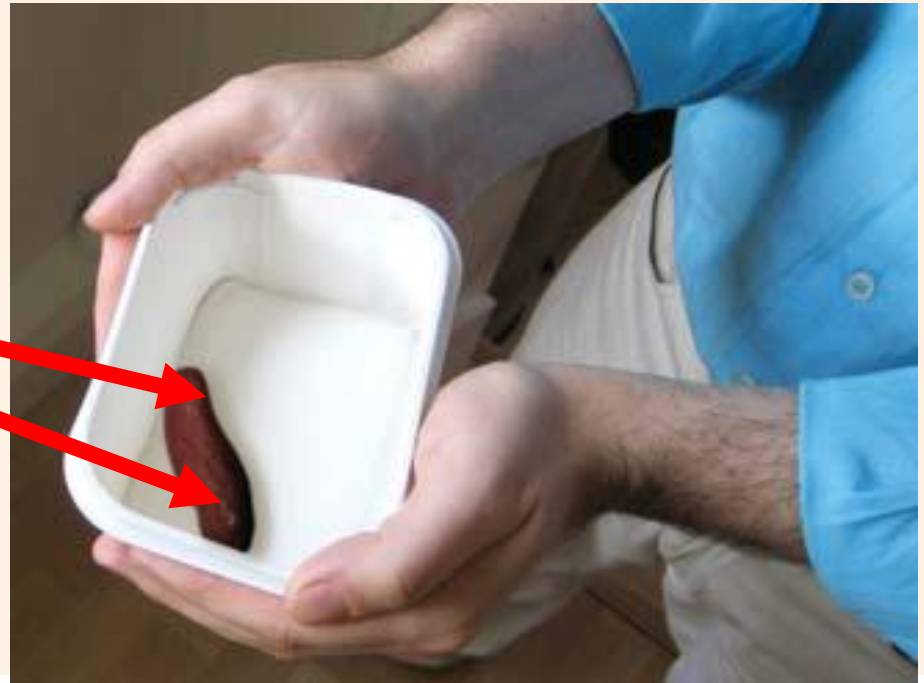
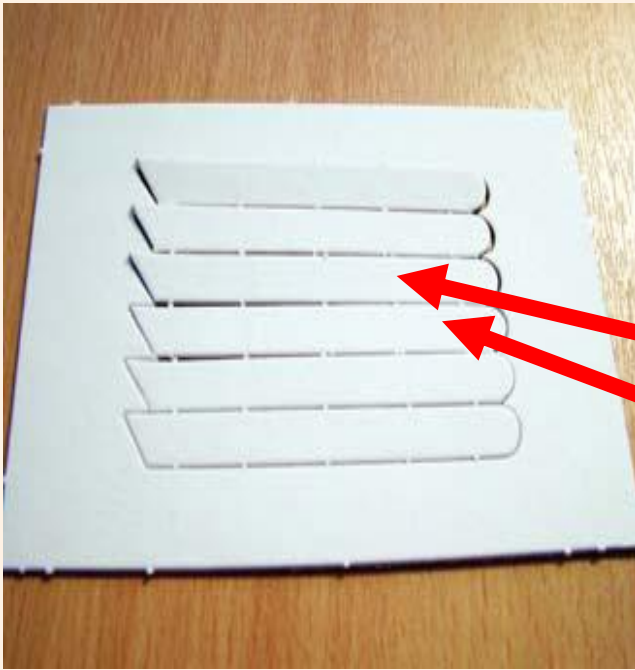


The way to use the card

The second box

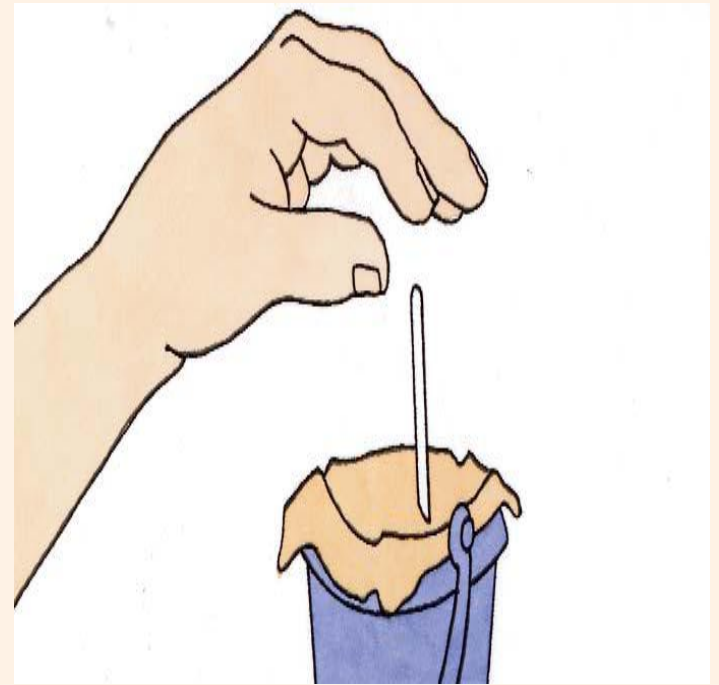


Use 2 sticks for Day 2 for 2 bits of poo



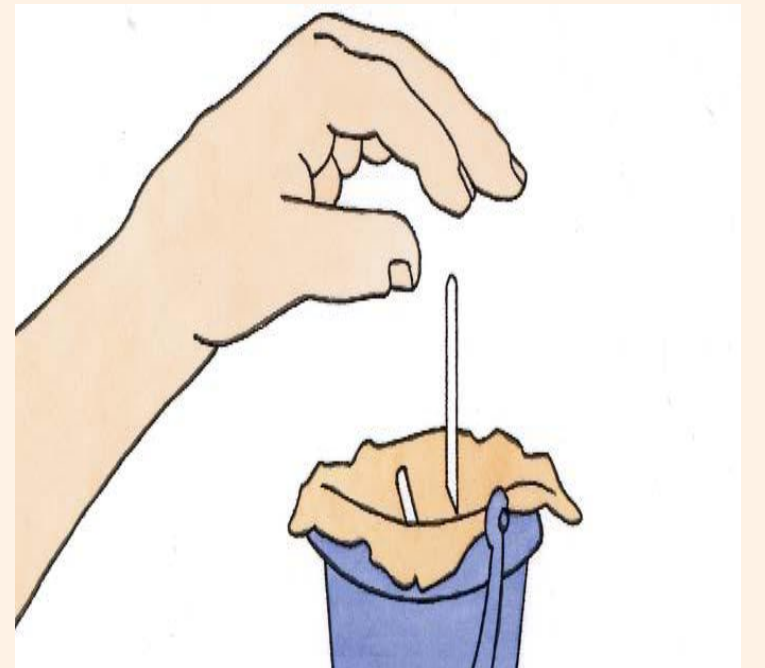
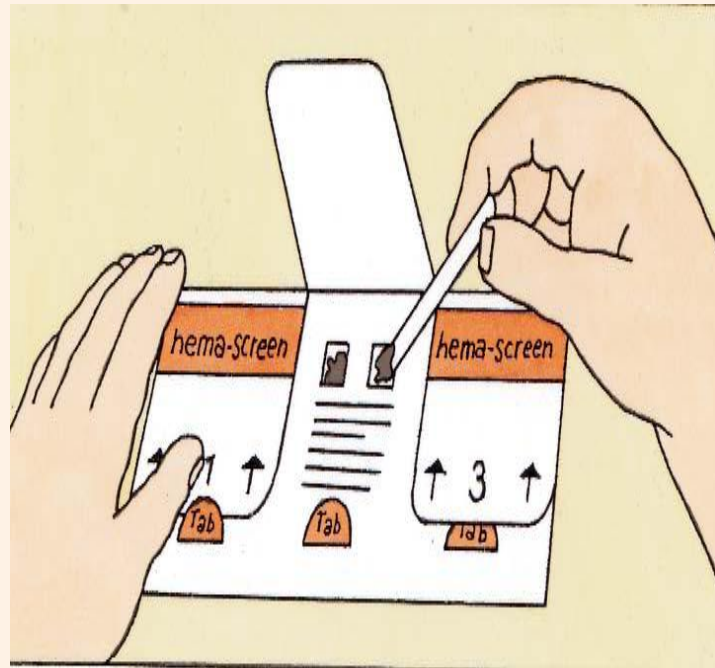
The way to use the card

Use a clean stick for each box



The way to use the card

The second box

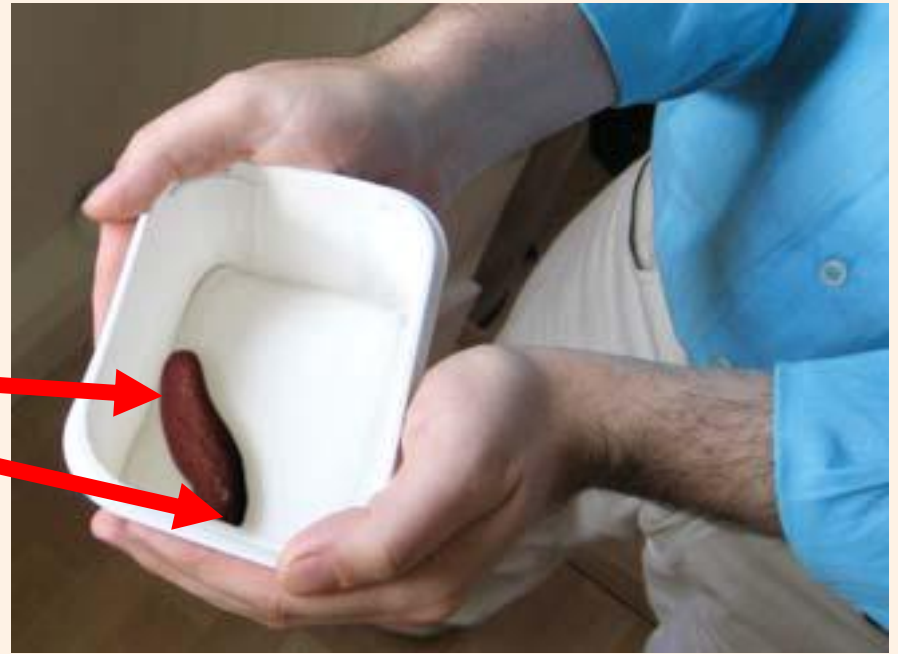
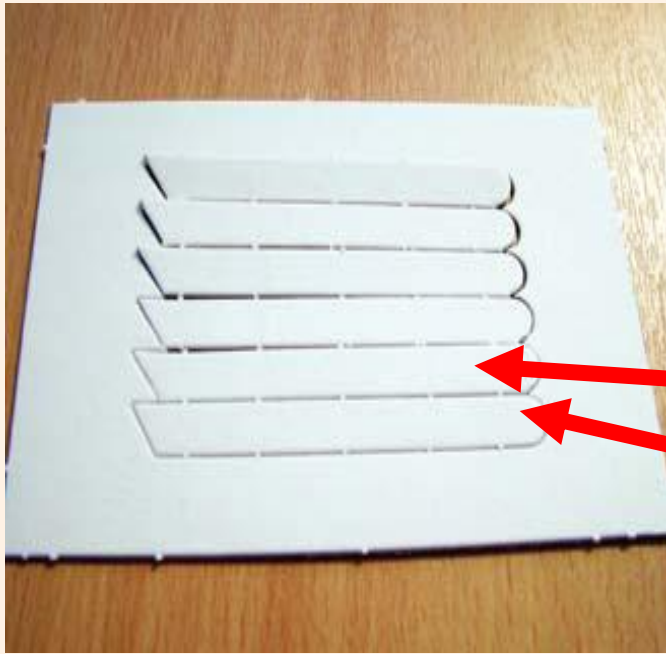


Liverpool Community Health



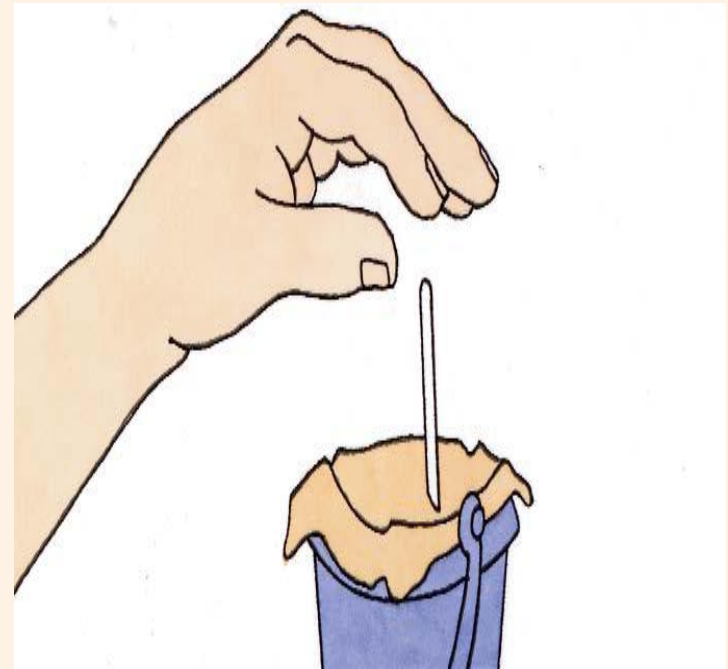
NHS Trust

Use 2 sticks for Day 3 for 2 bits of poo



The way to use the card

Use a clean stick for each box



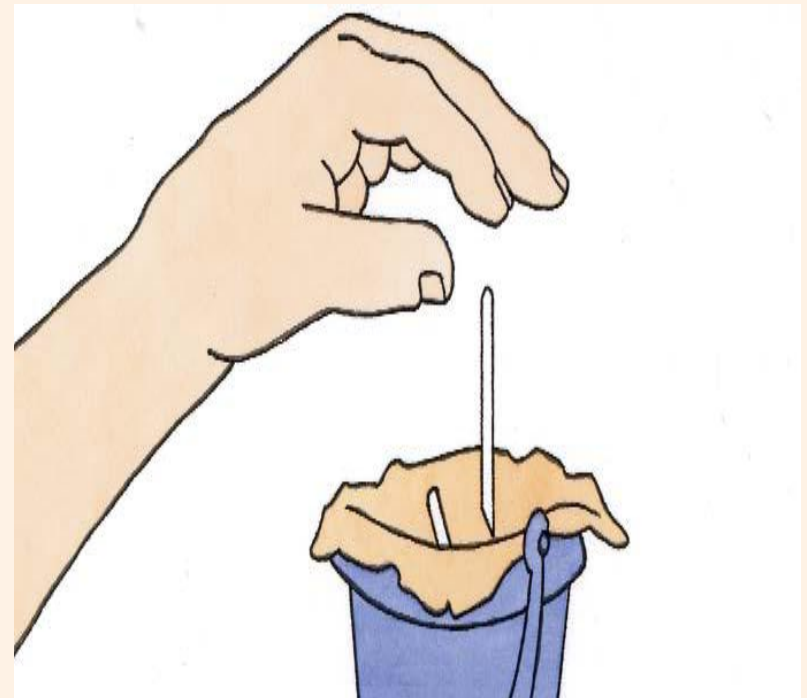
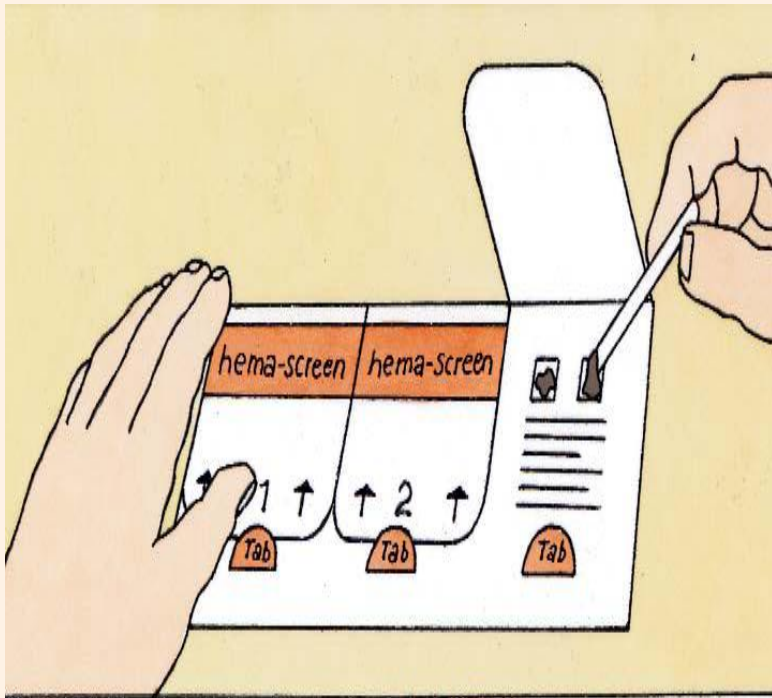
Liverpool Community Health



NHS Trust

The way to use the card

The second box



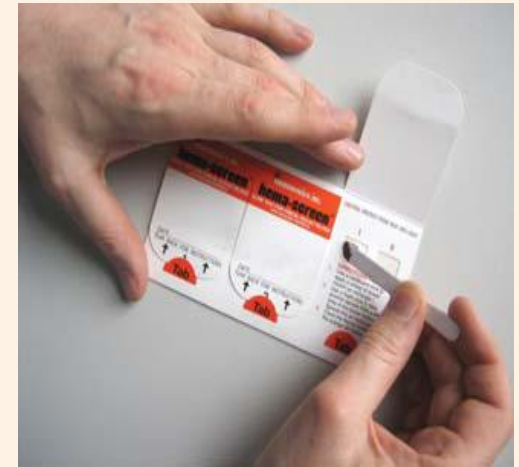
When you have collected three days of different samples of your poo the test is finished.



Day 1



Day 2



Day

3

Liverpool Community Health
NHS Trust



Then put the card in the envelope



Then post



You will get a letter with the results of the bowel test.

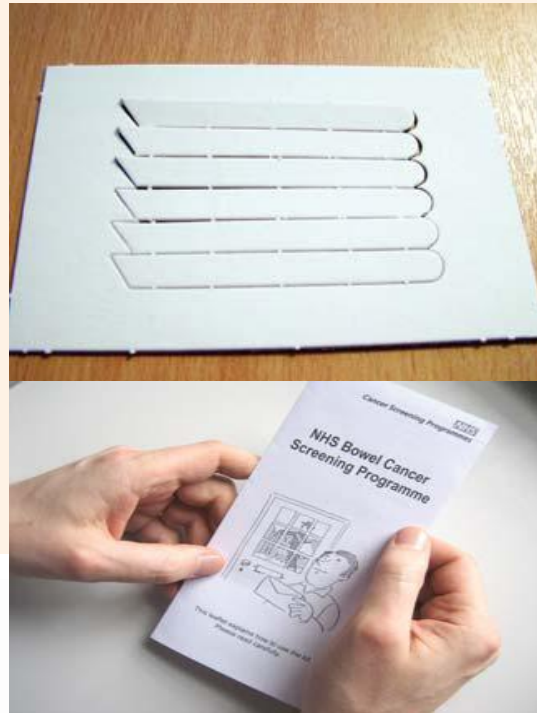
You will get a letter in two weeks at your home



You will be sent the test again in 2 years

Age 60 to 75

You will get these things in the post



ool Community Health



NHS Trust



References

BE CLEAR ON BOWEL CANCER REFERENCES

Page 1

Page 2 Cheshire and Merseyside Bowel Cancer Screening Programme and dailymail.co.uk/i/pix/2008/11/17/article-0-...

Page 3 and Ulster University and Compass Advocacy Network Limited

Page 4 Ulster University and Compass Advocacy Network Limited and

www.inloughborough.com/.../mobile-telephone.jpg and
sportsdietitian.co.uk/images/feature_caller_i...

Page 5 Blood in toilet, can't find

Page 6 Cartoon sitting on toilet and *fresh-hemorrhoids-cure...*

Page 7 Ulster University and Compass Advocacy Network Limited

Page 8 apnutripharm.com/fatigue-treatment.html and www.chronicfatiguesite.com/

Page 9 www.mesothelioma.uk.com/.../breathless.jpg

Page 10 and www.womenhealthzone.com/.../abdominal-pain1.jpg

Page 11 billivorylarsen.com/.../03/weight-scale1.jpg and www.eszences.com/media/iStockWeightLossFearB.jpg and www.assistireland.ie/.../

Page 12 Ulster University and Compass Advocacy Network Limited and

www.inloughborough.com/.../mobile-telephone.jpg and
sportsdietitian.co.uk/images/feature_caller_i...

Page 13 Cheshire and Merseyside Bowel Cancer Screening Programme

Page 14 Cheshire and Merseyside Bowel Cancer Screening Programme

Page 15 homepage.ntlworld.com/.../bristol-stool.html

Page 16 www.historyonthenet.com/shop/literacy-numerac...

Page 17 Cheshire and Merseyside Bowel Cancer Screening Programme

Page 18 National Cancer Screening Programme

Page 19 National Cancer Screening Programme

Page 20 Cheshire and Merseyside Bowel Cancer Screening Programme

Page 21 National Cancer Screening Programme



References

BE CLEAR ON BOWEL CANCER REFERENCES CONTINUED:

Page 22 National Cancer Screening Programme

Page 23 Cheshire and Merseyside Bowel Cancer Screening Programme

Page 24 National Cancer Screening Programme

Cheshire and Merseyside Bowel Cancer Screening Programme

Page 25 National Cancer Screening Programme

Page 26 Cheshire and Merseyside Bowel Cancer Screening Programme

Page 27 Cheshire and Merseyside Bowel Cancer Screening Programme

Page 28 Cheshire and Merseyside Bowel Cancer Screening Programme

Page 29 Cheshire and Merseyside Bowel Cancer Screening Programme

Page 30 Cheshire and Merseyside Bowel Cancer Screening Programme

